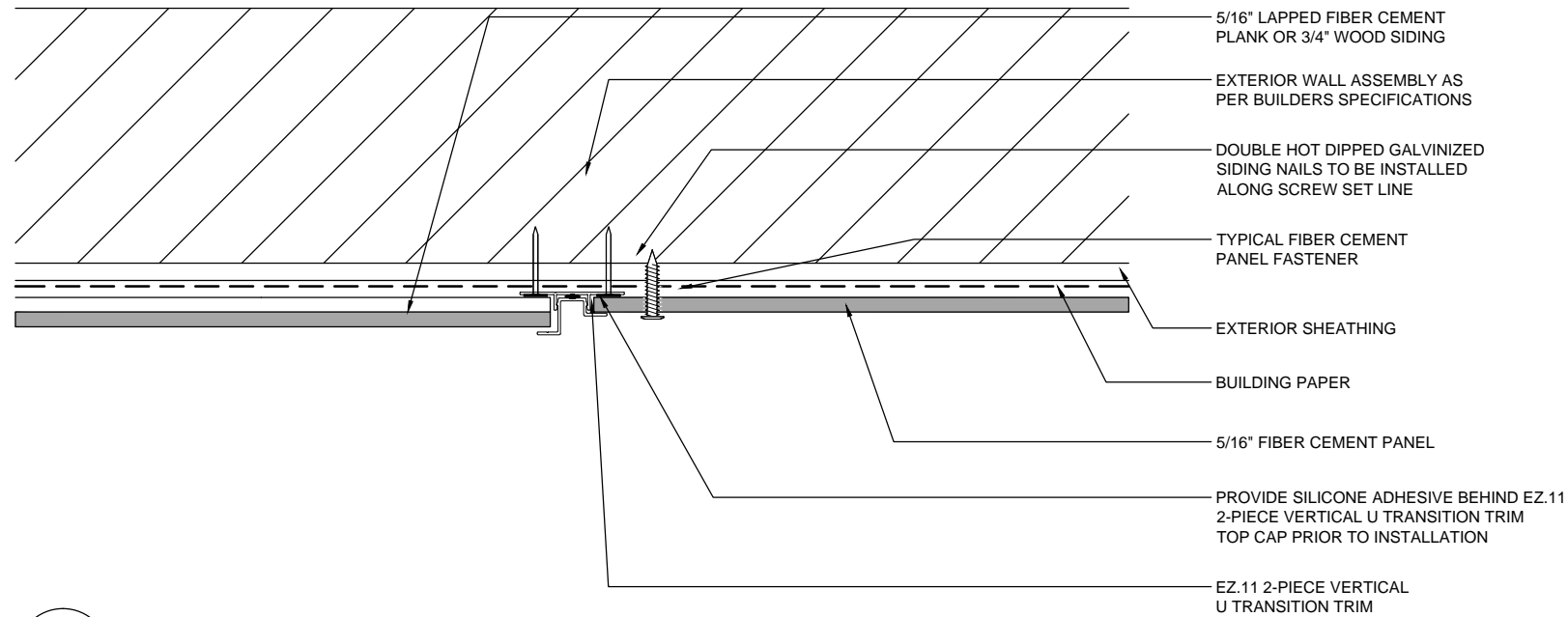
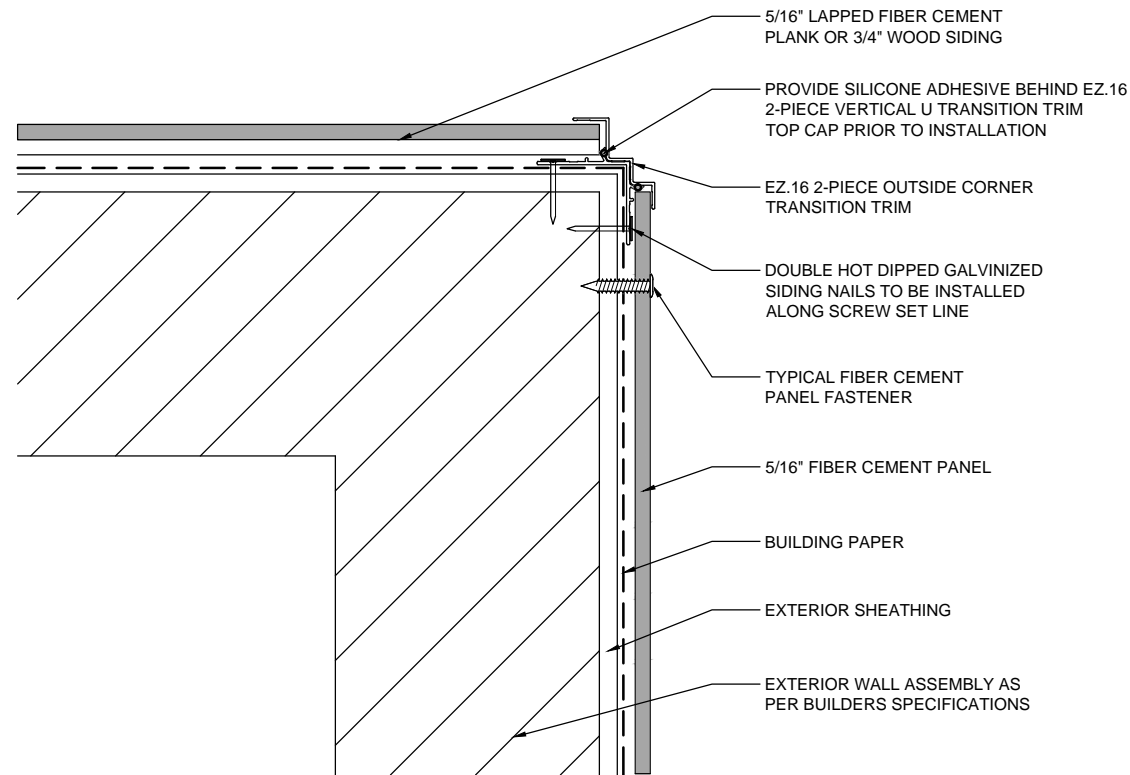


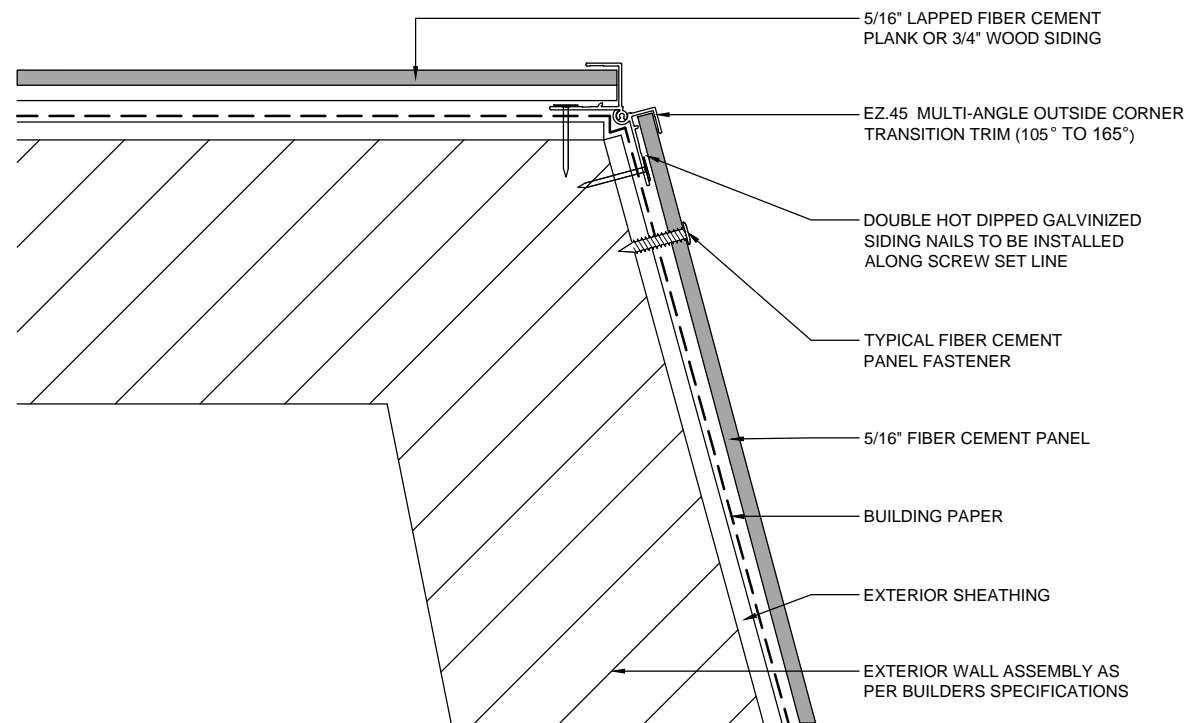
Fiber Cement Trim  
 by EasyTrim Reveals



33 TYPICAL EZ.11 2-PIECE VERTICAL U TRANSITION TRIM  
 A10 SCALE: 3" = 1'-0"



34 TYPICAL EZ.16 2-PIECE OUTSIDE CORNER TRANSITION TRIM  
 A10 SCALE: 3" = 1'-0"



35 TYPICAL EZ.45 MULTI-ANGLE OUTSIDE CORNER TRANSITION TRIM (105° TO 165°)  
 A10 SCALE: 3" = 1'-0"

The contractor / builder must verify all dimensions on the job and report any discrepancy to the designer before proceeding with the work. Drawings are NOT to be scaled. All drawings and specifications are instruments of service and the copyright property of the designer and must be returned upon request.

DRAWN / REVISED BY:	REVIEWED BY:
DATE ISSUED:	DRAWING NUMBER:
PROJECT NUMBER:	A10
SCALE:	